

# The West Nile Weekly

## Welcome back!

Now that the weather is warming up, we will begin producing predictions for 2017. We start now at the end of May with a year-long outlook, which we will update in June and July. There will also be weekly predictions made during the season. Find them all at

[mosquito.sdstate.edu](http://mosquito.sdstate.edu)

## How does the weather look?

Early 2017 has been very warm, with a stretch of record high temperatures in mid-February to early March (Figure 1). There was a brief period in mid-March when temperatures dropped back below freezing, but this lasted only a week.

The [three-month outlook](#) produced by NOAA in the middle of May says that our area will probably have average temperatures for the next three months. Much of the country will be warmer than usual.

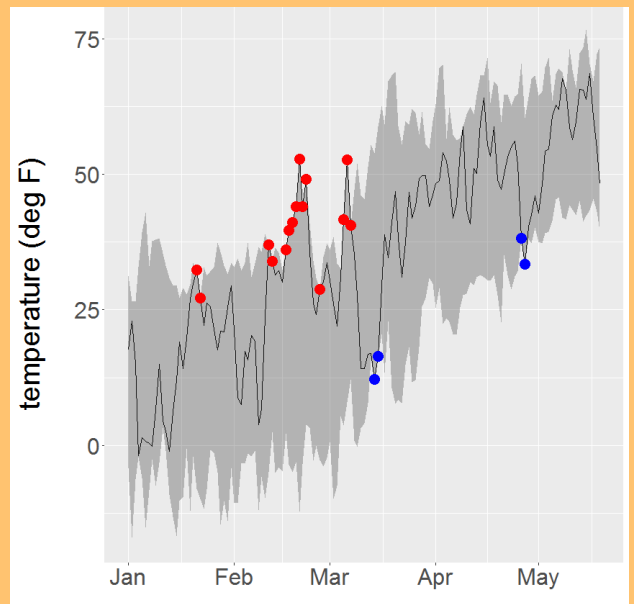
## How are the mosquitoes?

We do not yet have any reports of tested mosquitoes, and it is far too early to estimate viral prevalence.

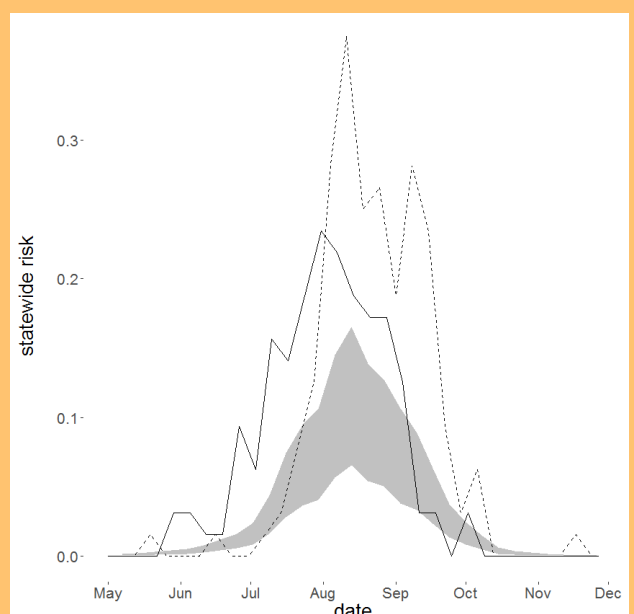
## What to expect?

For the moment, 2017 looks average, with around 60 cases expected; the median for 2004-2016 is 57 cases per year. Risk this year currently looks slightly lower than risk last year, but 2017 is not expected to be a low WNV year and vector control is recommended.

Warm winters typically mean more WNV, and daily temperatures from the beginning of the year until now have on average been 3.1°F above historical averages. Compare this to 2012, one of the worst WNV years in SD, in which December-February temperatures were 3.9°F above average.



**Figure 1:** Average daily temperatures in SD in early 2017. Red means a new daily high was set for 2004-2017 (in grey). Blue, a new low.



**Figure 2:** Predicted risk for 2017 (grey) compared to 2016 (black, solid) and 2012 (black, dashed).